

Initiatives of the WHO Regional Office for Europe on Health Equity

Dr Piroska Östlin

Acting Director

Division of Policy and Governance for Health and Well-being

Chris Brown

Programme Manager

Social Determinants and Health Equity



World Health
Organization

REGIONAL OFFICE FOR
Europe



Organisation
mondiale de la Santé

BUREAU REGIONAL DE L'
Europe



Weltgesundheitsorganisation

REGIONALBÜRO FÜR
Europa



Всемирная организация
здравоохранения

Европейское региональное бюро



Health 2020: strategic objectives

Working to improve health
for all and reducing
health inequalities

Improving leadership and participatory
governance
for health

Health 2020: four common policy priorities for health

Investing in health
through a life-
course approach
and empowering
people

Tackling Europe's
major health
challenges:
noncommunicable
and communicable
diseases

Strengthening
people-centred
health systems,
public health
capacities and
emergency
preparedness,
surveillance and
response

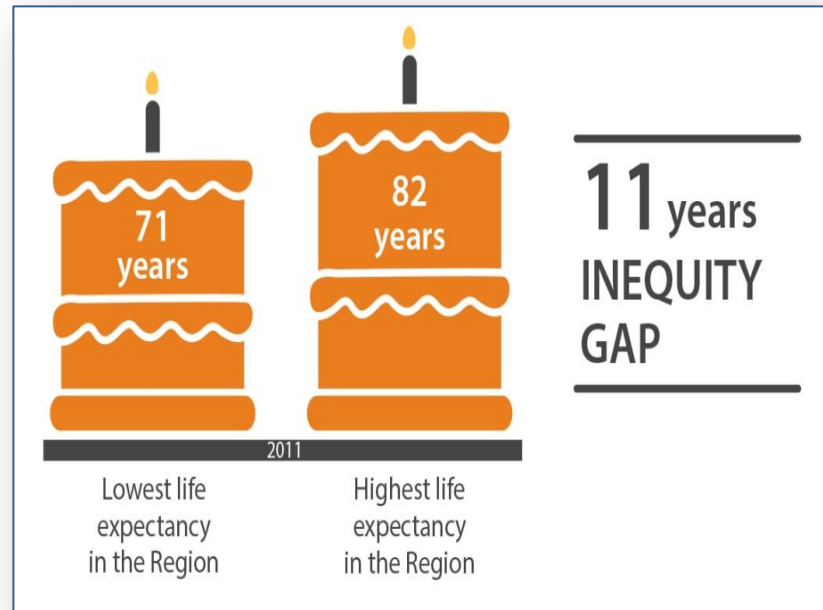
Creating resilient
communities and
supportive
environments

Equity is a priority in all our work



Headline target 3
Reduce inequalities in Europe

3.1 Reduction in the gaps in health status associated with social determinants within the European Region population



No health equity without addressing determinants, gender inequities and making the right to health a reality



Social determinants



Gender inequities



Right to health

Key challenges



Review of social determinants
and the health divide in
the WHO European Region:
final report



Interventions to reduce health inequities have been predominantly small-scale/time-limited projects.

Comprehensive strategies and targets exist in some countries but many are being only partially implemented.

Ongoing challenge of “connecting” across sectoral policies – sustaining action on the *pathways from social determinants to health equity*.

Weakness in participatory approaches involving wider society and the intended beneficiaries of inequity reduction policies.

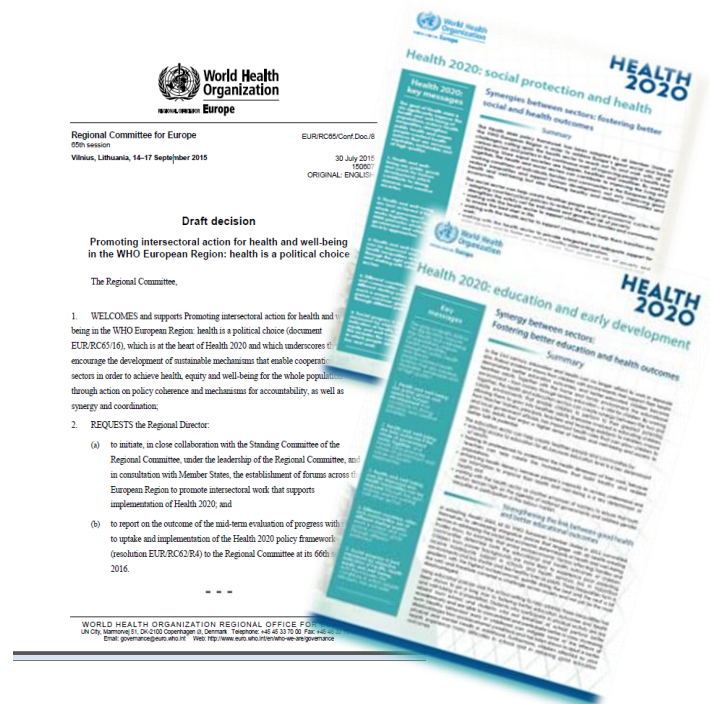
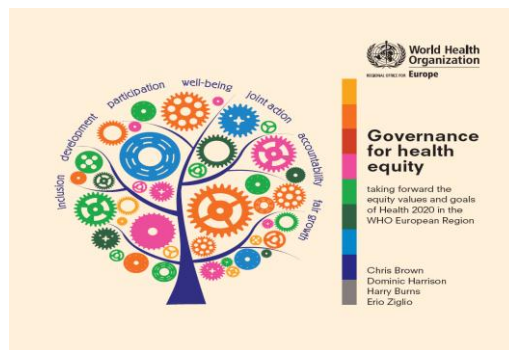
More attention and increased capacity are needed to create and sustain the political commitment across national and local government and society for health equity.

The health sector cannot do it alone but it can do more to ensure equity is fully integrated into the design and monitoring of all its policies and services and to support this in non-health sector policies.

Evidence and cross-sectoral policy action



Using evidence to build common agendas and political commitment for reducing health inequities

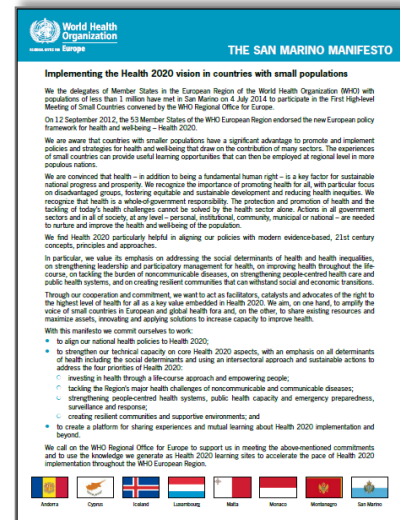


Partnerships

Moving from evidence to action through partnerships:
collaboration among countries with common policy contexts and
challenges in addressing the reduction of health inequities.

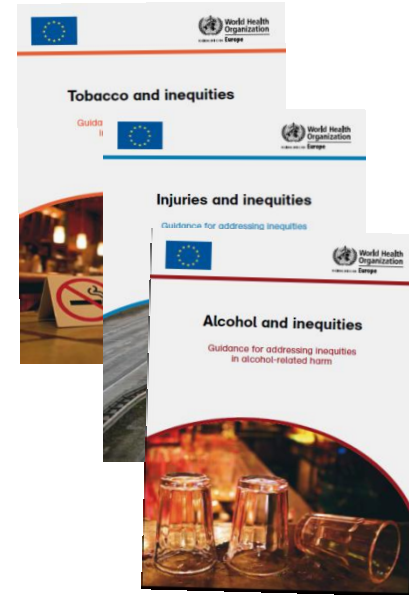


SOUTH-EASTERN EUROPE
HEALTH NETWORK



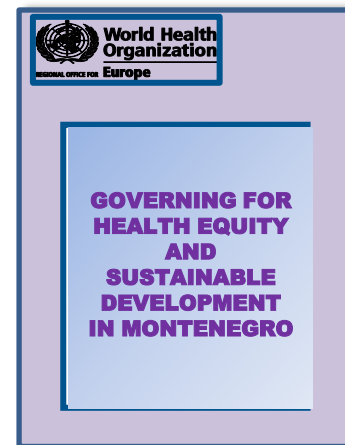
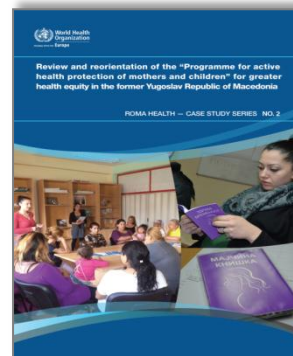
Mainstreaming equity into policies and technical programmes

- Guidance
- Regional policies
- Assessment tools



Supporting national policies and reviews

Strengthening policies, programmes and governance for health equity



Monitoring and evaluation

Focus

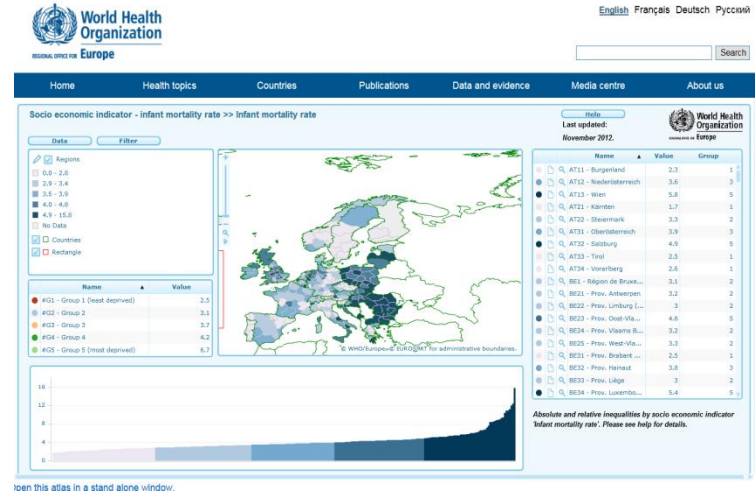
Geographically defined inequalities in health in the European Union and selected neighbouring countries, with emphasis on regions

Association of socioeconomic status and health indicators at level of population groups, with some emphasis on health systems performance

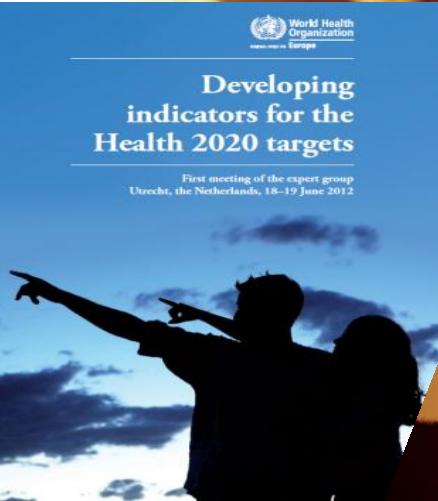
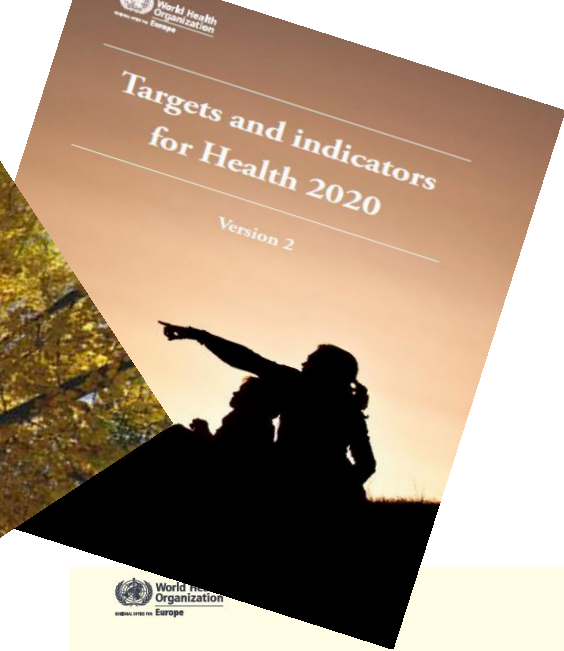
Aims

To improve use of readily available statistical data and information relevant to equity in health

To produce an interactive atlas as a tool for information sharing



**WHO interactive atlas of health inequalities
in 280 regions of Europe**



REGIONAL OFFICE FOR Europe All on WHO Regional Office for Europe website: www.euro.who.int

Thank you

Contact information:

Piroska Östlin: pio@euro.who.int

Chris Brown: chb@ihd.euro.who.int