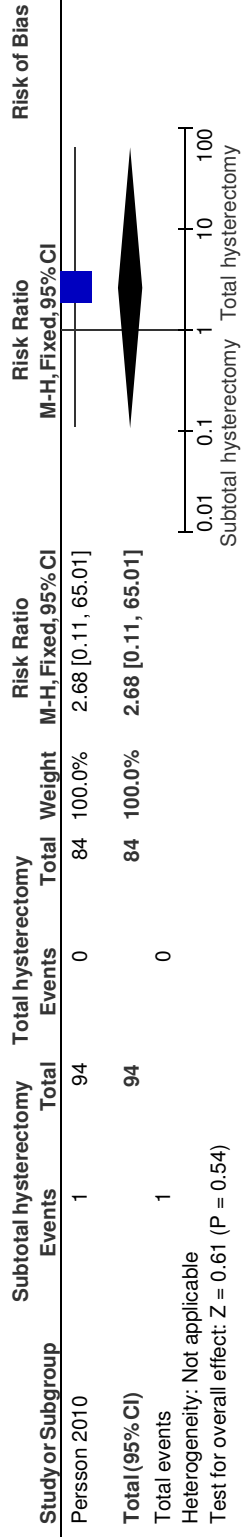


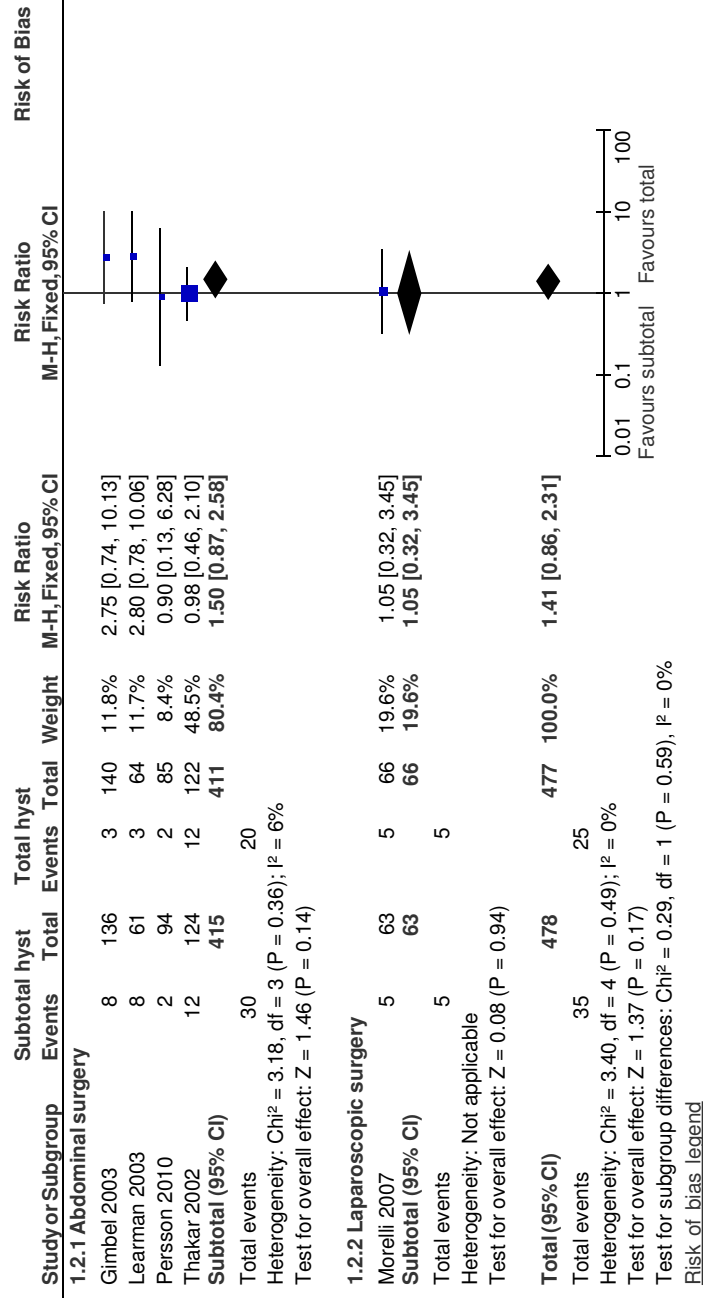
1 Fokuseret spørgsmål 1 (PICO1). Subtotal hysterektomi sammenlignet med total hysterektomi ved benign sygdom.

1.1 Reoperation pga. postoperativ intraabdominal blødning. – *Abdominal hysterektomi*. (Repeat surgery, postoperative intraabdominal bleeding)

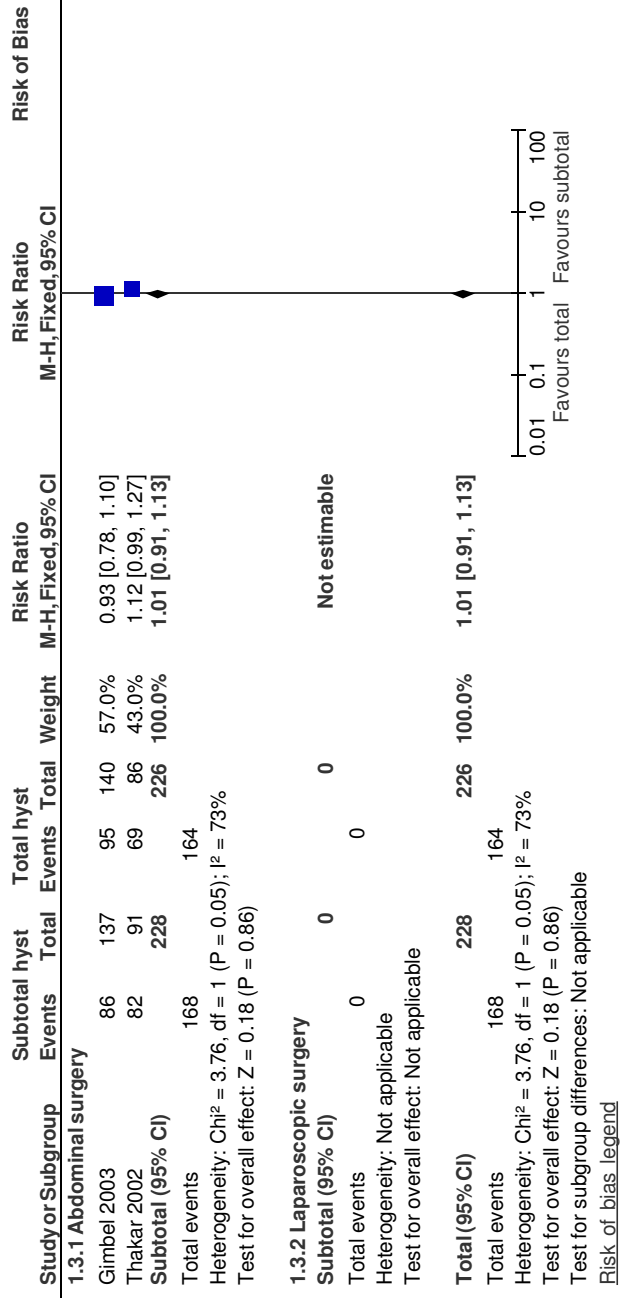


[Risk of bias legend](#)

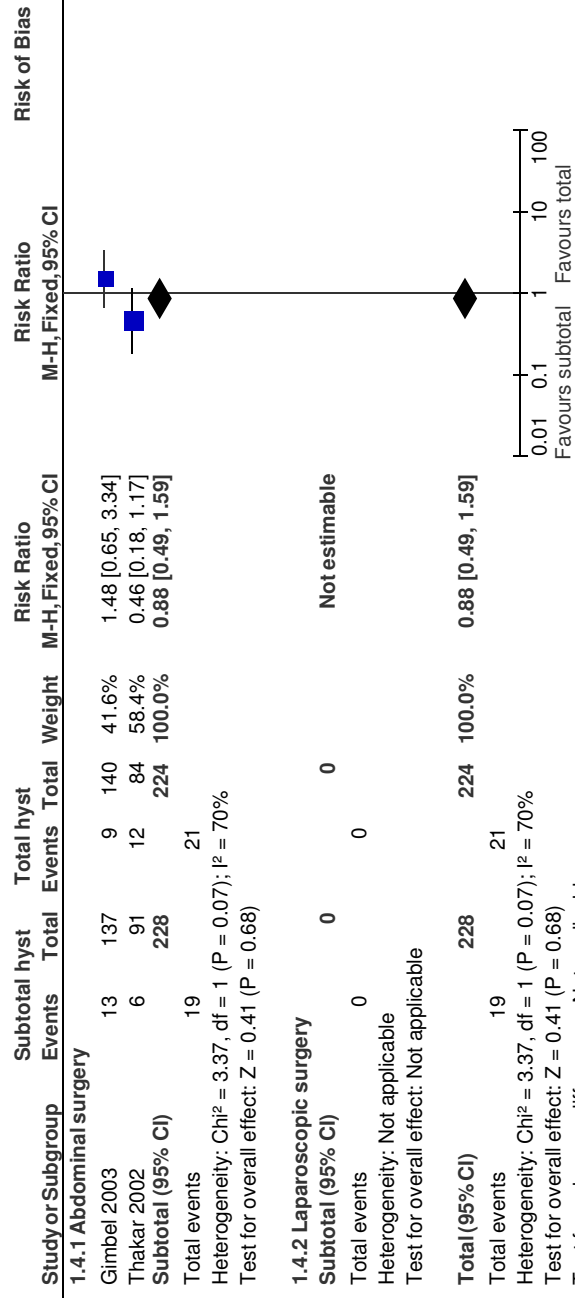
1.2 Stressinkontinens indenfor 2 år postoperativt. - Abdominal + laparoskopisk hysterektomi (Stress urinary incontinence within 2 years post surgery)



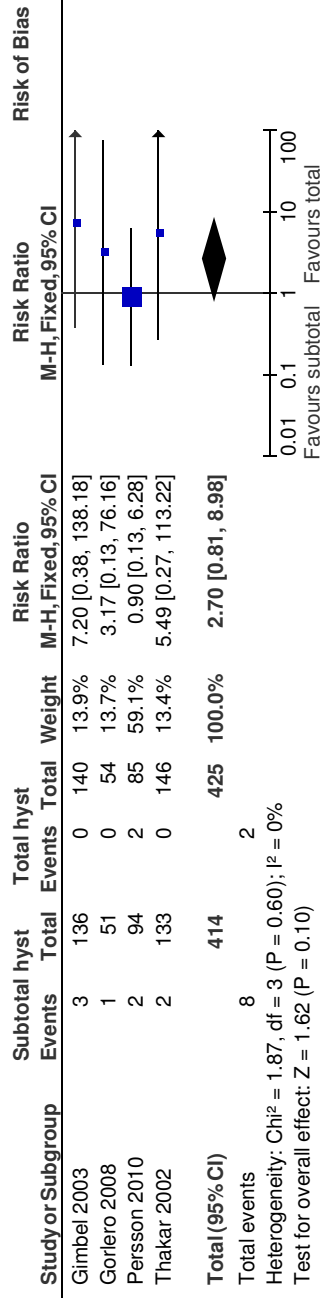
1.3 Tilfredshed med sex indenfor 2 år postoperativt. -Abdominal hysterektomi. (Satisfaction with sex within 2 years post surgery)



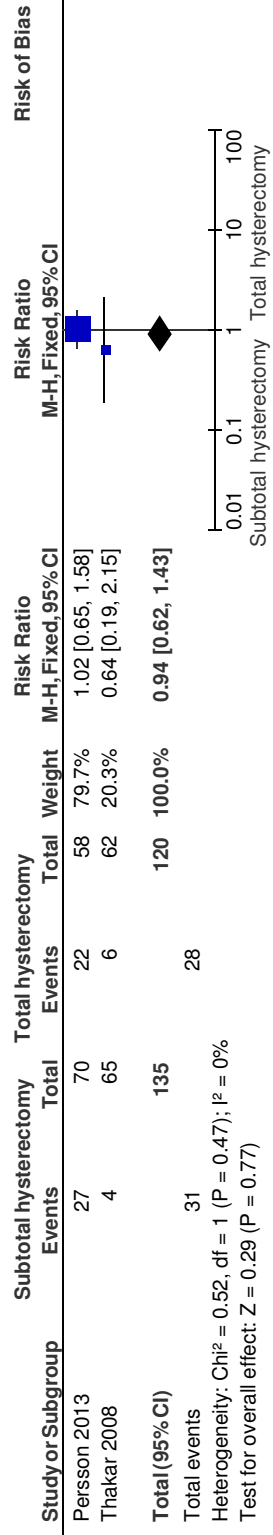
1.4 Smerter ved sex indenfor 2 år postoperativt. - Abdominal + laparoskopisk hysterektomi (Prevalence of pain during sex within 2 years post surgery)



1.5 Prolaps (POP) indenfor 2 år postoperativt. - Abdominal + laparoskopisk hysterektomi (Pelvic prolapse within 2 years post surgery)

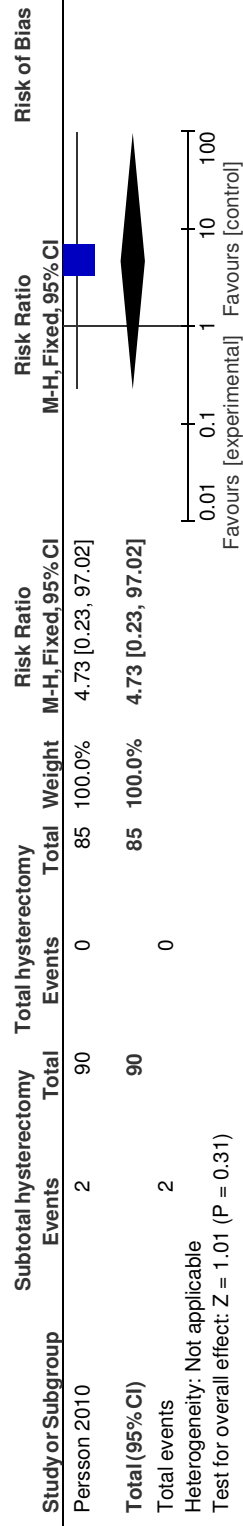


1.6 Prolaps (POP ≥ grad 2) 7-11 år postoperativt. – Abdominal hysterektomi . (Pelvic prolapse ≥ stage 2, 7-11 years post surgery)



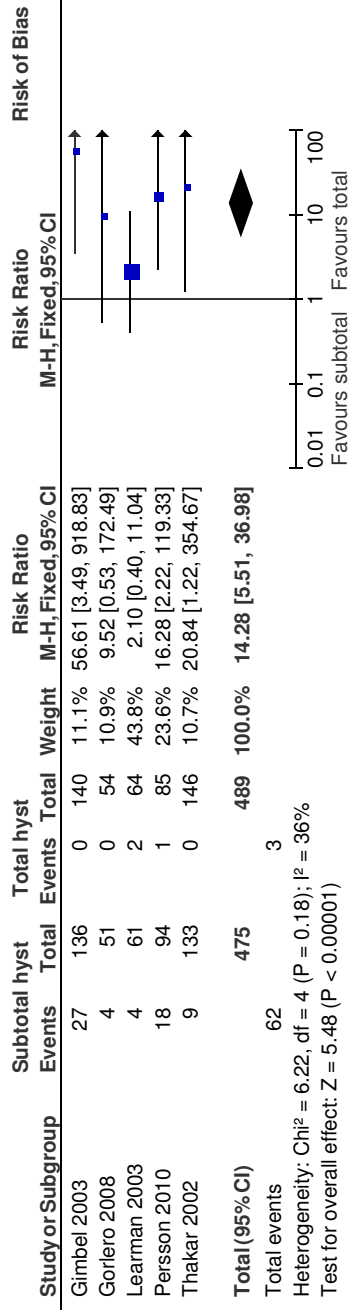
Risk of bias legend

1.7 Cervikal dysplasi indenfor 12 mdr. postoperativt. – Abdominal hysterektomi.

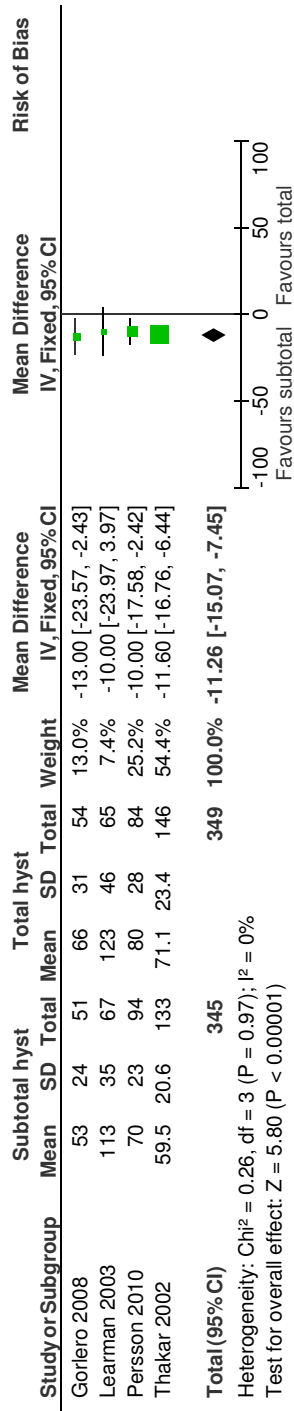


Risk of bias legend

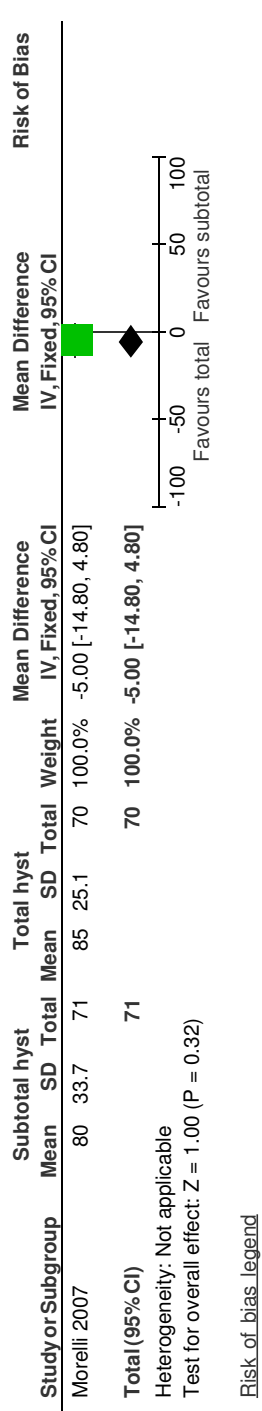
1.8 Cyklisk vaginalblødning indenfor 2 år postoperativt. -Abdominal + laparoskopisk hysterektomi (Cyclical bleeding within 2 years post surgery)



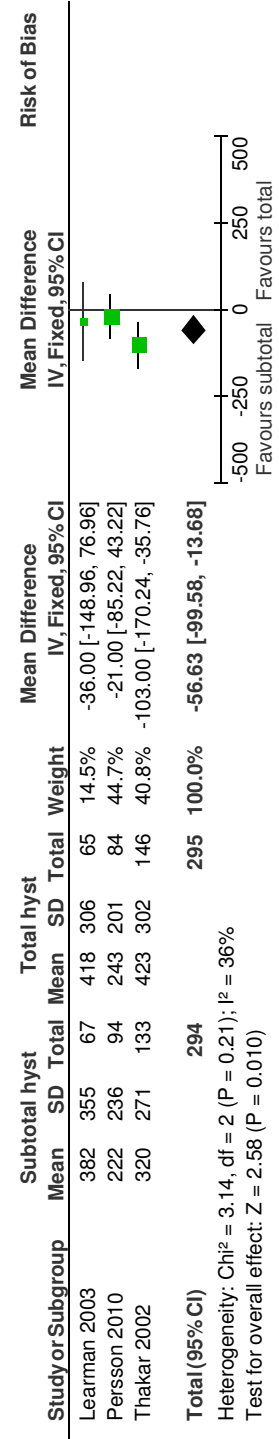
Risk of bias legend  
 1.9 Operationstid (min.) - Abdominal hysterektomi. (Operating time (mins))



Risk of bias legend  
 1.10 Operationstid (min.) -Laparoskopisk hysterektomi. (Operating time (mins))

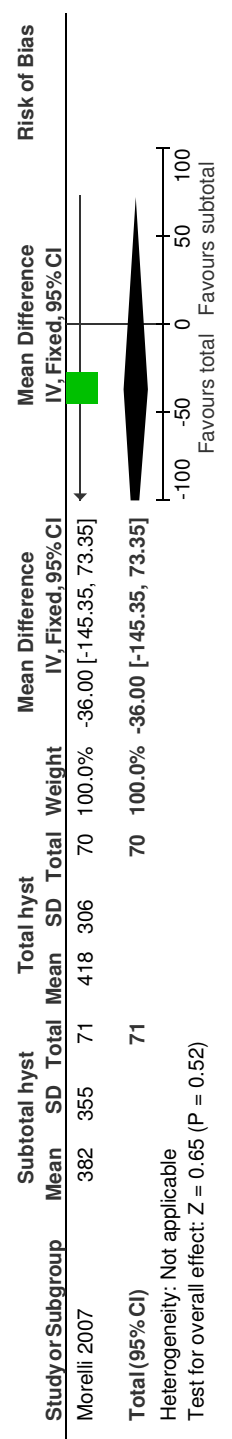


1.13 Peroperativ blødning (ml) - Abdominal hysterektomi. (Blood loss during surgery (mls))



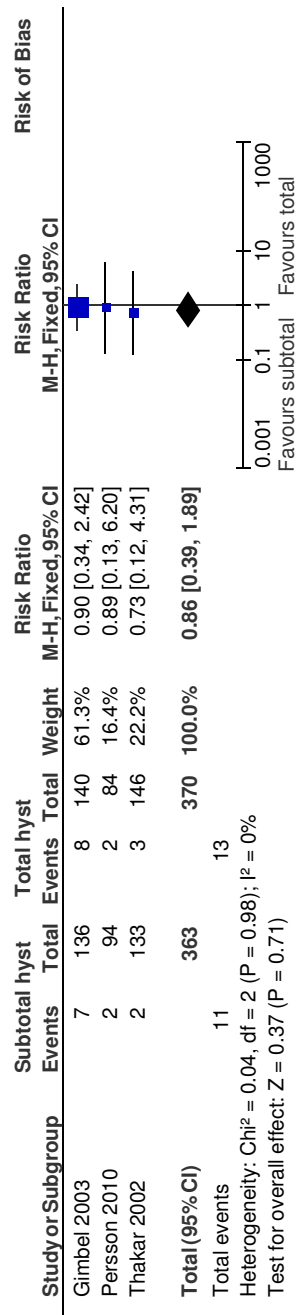
Risk of bias legend

1.14 Peroperativ blødning (ml) - Laparoskopisk hysterektomi. (Blood loss during surgery (mls))



Risk of bias legend

1.24 Sårinfektioner Postoperativt under indlæggelsen. -Abdominal + laparoskopisk hysterektomi (Wound infections, predischarge)



Risk of bias legend

2 Fokuseret spørgsmål 2 (PICO2). Vaginal hysterektomi sammenlignet med konventionel laparoskopisk hysterektomi ved benign sygdom

2.1 Reoperation (Repeat surgery)

Study or Subgroup	LAVH Events	Total	VH Events	Total	Risk Ratio IV, Fixed, 95% CI	Risk Ratio IV, Fixed, 95% CI	Risk of Bias
Sesti 2008	0	40	0	40	Not estimable	0.1 0.2 0.5 1 2 5 10 Favours VH Favours LAVH	

Risk of bias legend

2.2 Vaginaltopsruptur (Vaginal cuff dehiscence)

Study or Subgroup	LAVH/LH Events	Total	VH Events	Total	Weight	Risk Ratio M-H, Fixed, 95% CI	Risk Ratio M-H, Fixed, 95% CI	Risk of Bias
Total (95% CI)	0	0	0	0	0	Not estimable		
Total events	0	0	0	0				
Heterogeneity: Not applicable								
Test for overall effect: Not applicable							0.01 0.1 1 10 100 Favours [experimental] Favours [control]	

Risk of bias legend

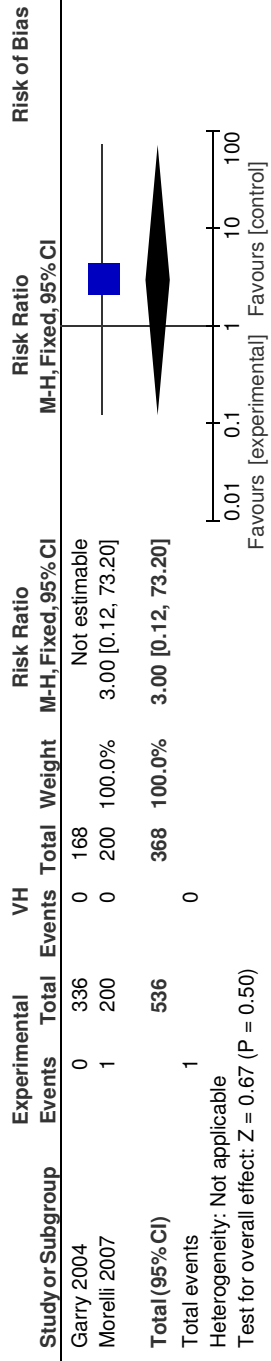
2.3 Læsion af naboorganer. Blære eller ureter (Intraoperative visceral injury, bladder or ureter)

Study or Subgroup	Experimental Events	Total	VH Events	Total	Weight	Risk Ratio M-H, Fixed, 95% CI	Risk Ratio M-H, Fixed, 95% CI	Risk of Bias
Darai 2001	1	40	0	40	5.2%	3.00 [0.13, 71.51]		
Garry 2004	4	336	2	168	27.6%	1.00 [0.19, 5.40]		
Morelli 2007	12	200	2	200	20.7%	6.00 [1.36, 26.46]		
Ottosen 2000	0	40	1	40	15.5%	0.33 [0.01, 7.95]		
Ribiero 2003	0	20	1	20	15.5%	0.33 [0.01, 7.72]		
Richardson 1995	1	22	1	23	10.1%	1.05 [0.07, 15.70]		
Summitt 1992	1	29	0	27	5.4%	2.80 [0.12, 65.93]		
<b>Total (95% CI)</b>	<b>687</b>	<b>687</b>	<b>518</b>	<b>518</b>	<b>100.0%</b>	<b>2.03 [0.95, 4.36]</b>		
Total events	19		7					
Heterogeneity: Chi <sup>2</sup> = 5.57, df = 6 (P = 0.47); I <sup>2</sup> = 0%								
Test for overall effect: Z = 1.82 (P = 0.07)							0.01 0.1 1 10 100 Favours [experimental] Favours [control]	

Risk of bias legend

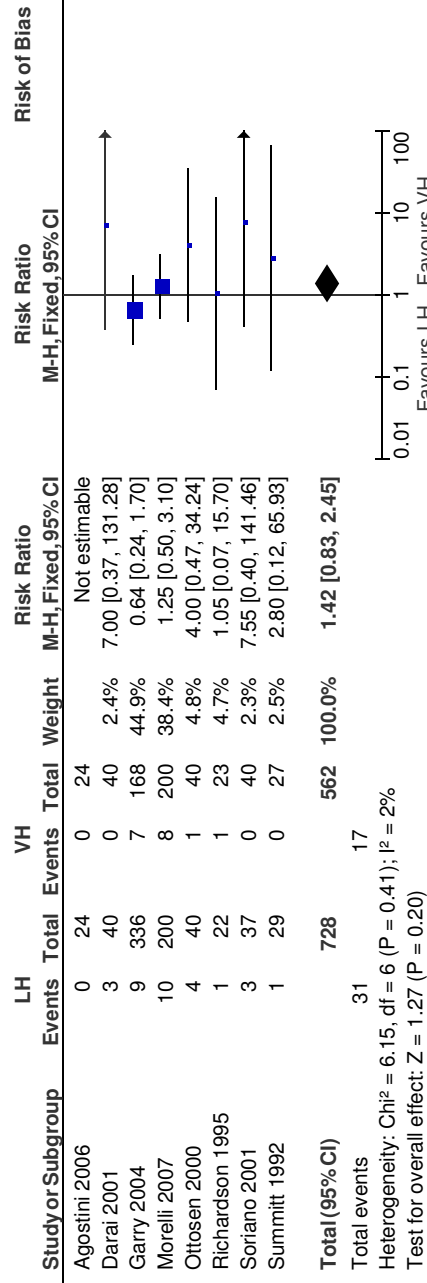


2.4 Læsion af naboorganer. Tarm. (Intraoperative visceral injury, bowel)



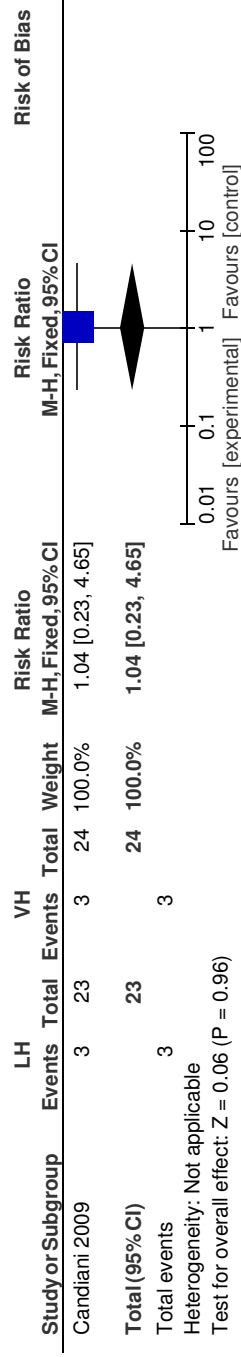
Risk of bias legend

2.5 Læsioner på naboorganer der førte til konvertering til laparotomi (Intraoperative visceral injury - Unintended laparotomy)



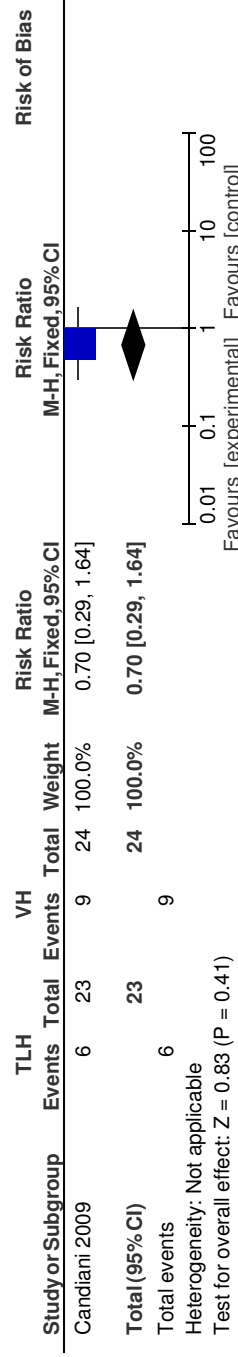
Risk of bias legend

2.6 Inkontinens (stress og urgency)



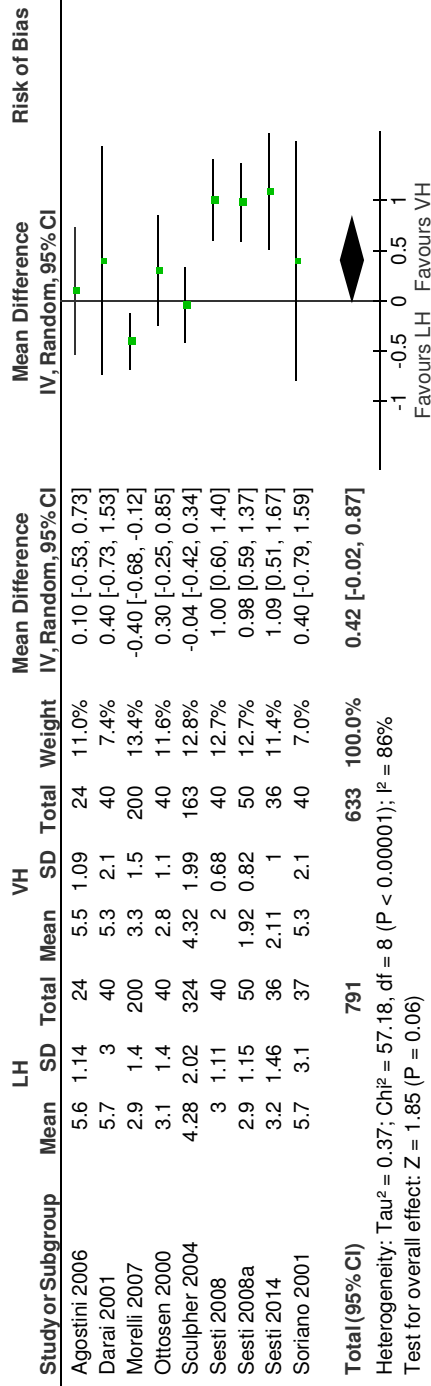
Risk of bias legend

2.7 Prolaps (POP grad 1-2)



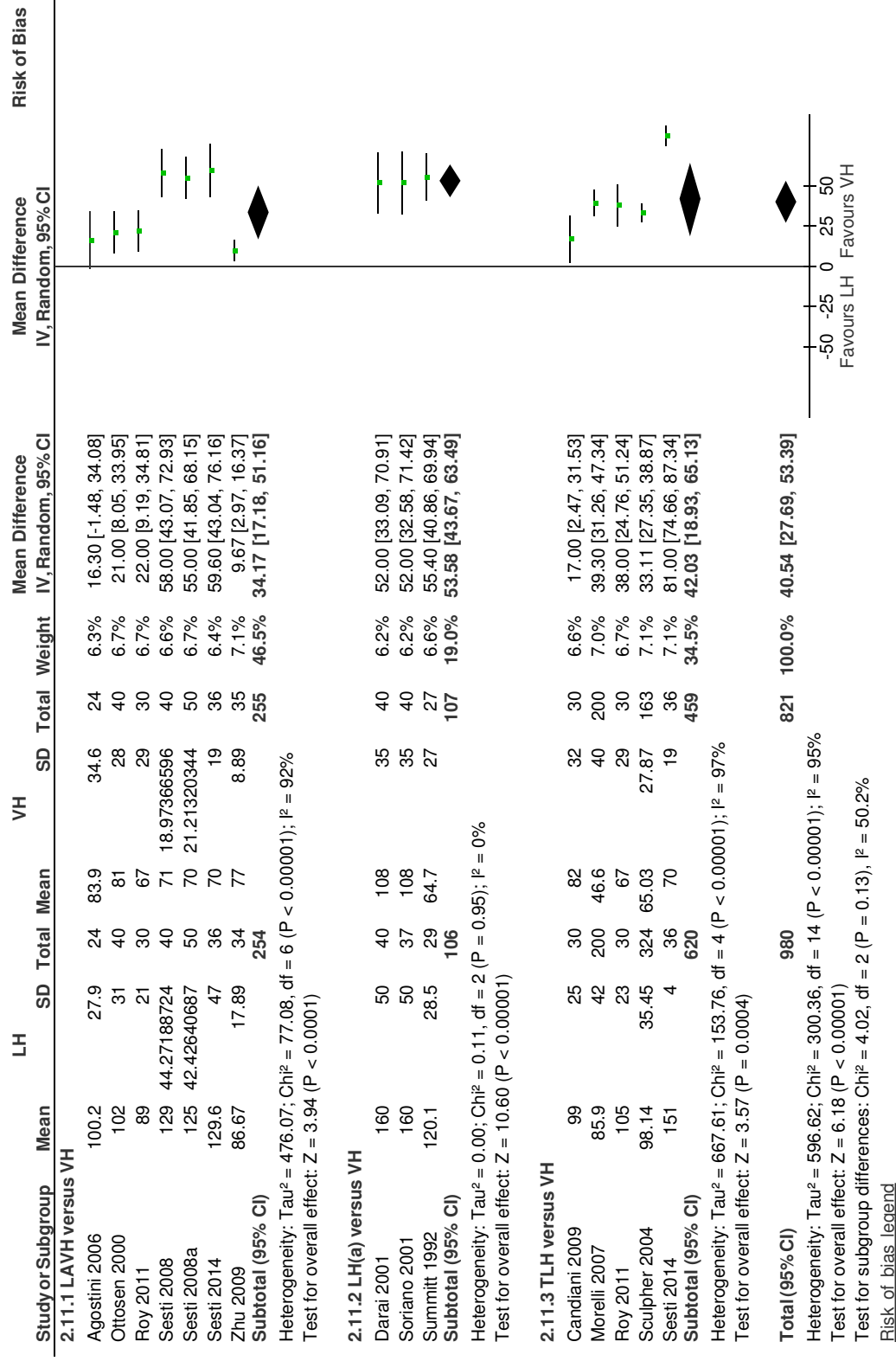
Risk of bias legend

2.9 Indlæggelsestid (dage). (Length of hospital stay (days))

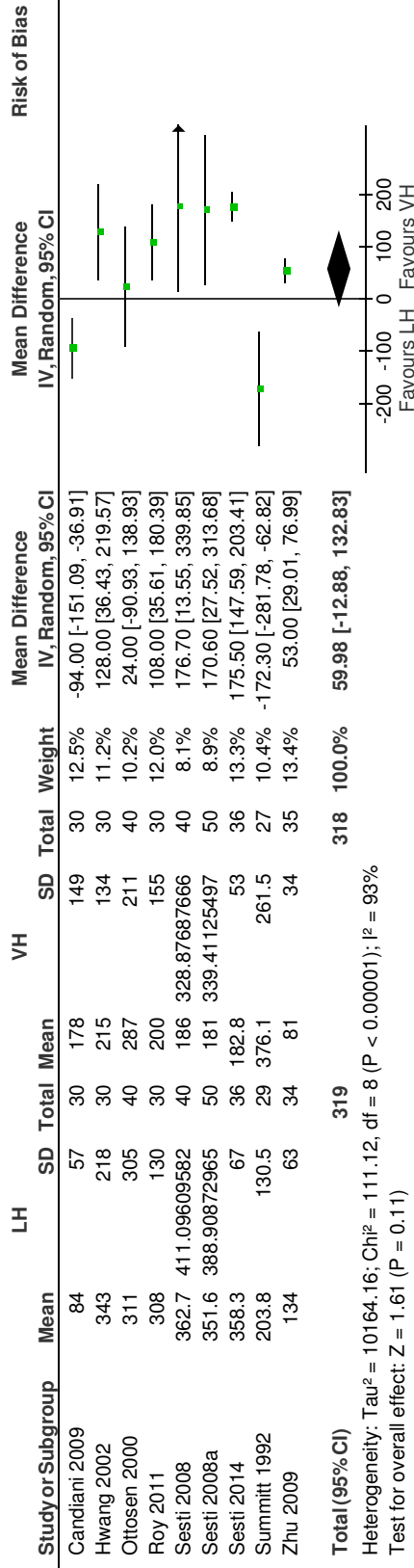


Risk of bias legend

2.11 Operationstid (min.) (Operating time (mins))

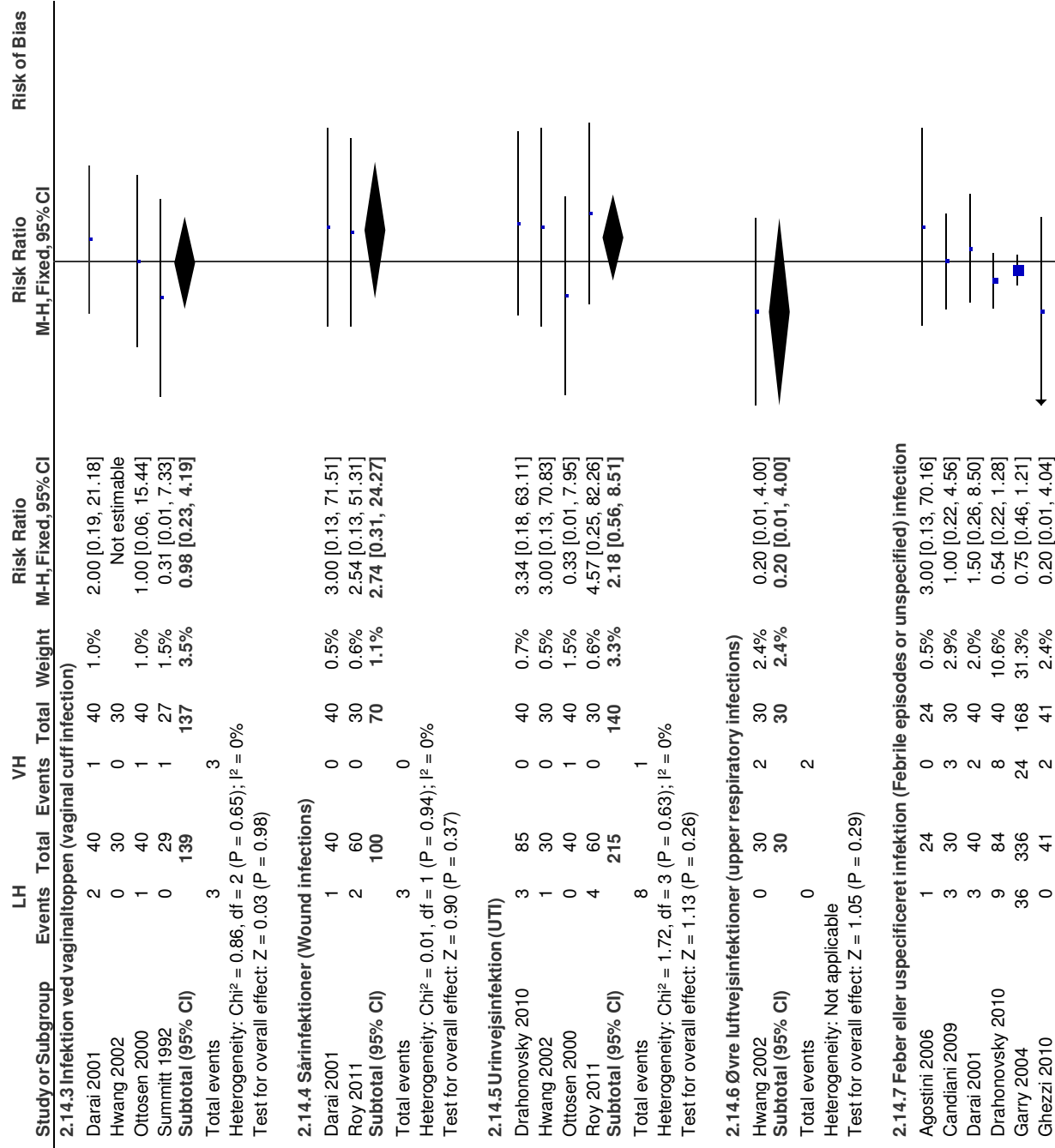


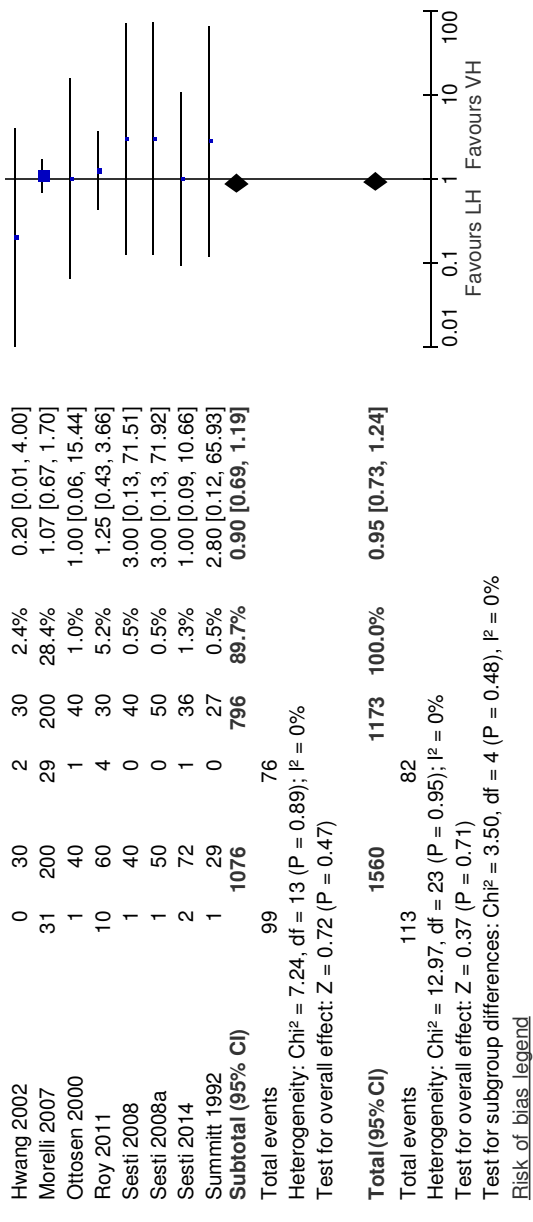
2.13 Peroperativ blødning (ml) (Blood loss during surgery (ml))



Risk of bias legend

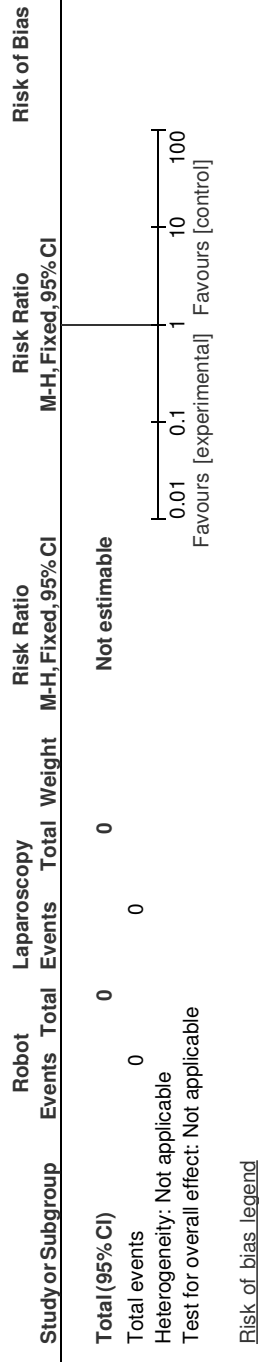
## 2.14 Infektion (Infection)



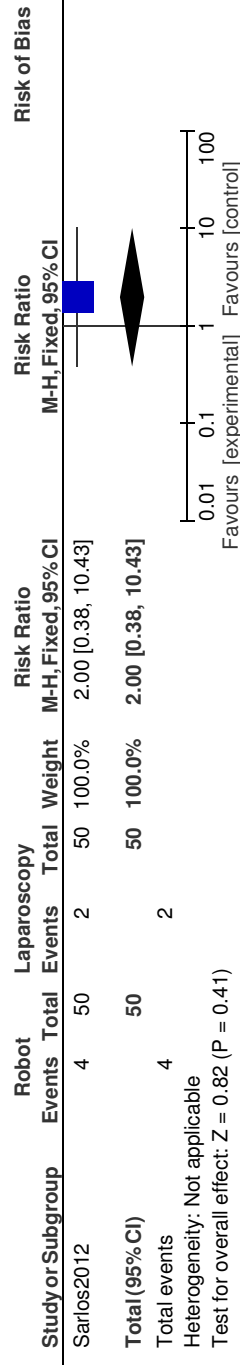


3 Fokuseret spørgsmål 3 (PICO4). Robotassisteret laparoskopisk hysterektomi sammenlignet med konventionel laparoskopisk hysterektomi ved benign sygdom

3.1 Mortalitet (mortality)

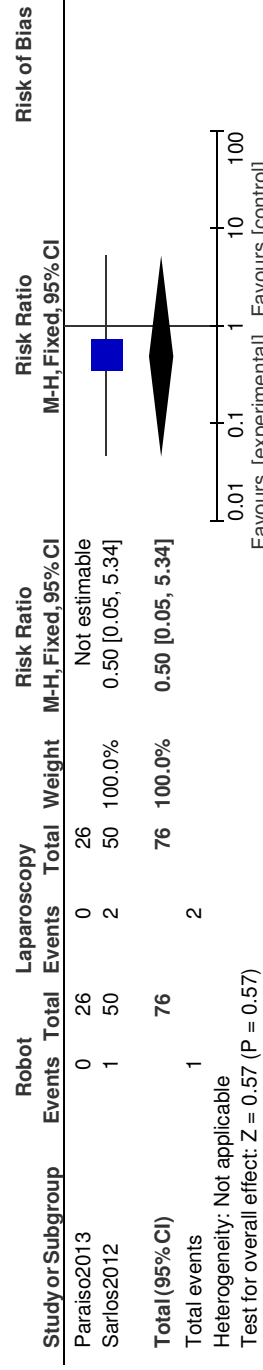


3.2 Reoperation pga. blødning, infektion, vaginaltopsruptur og hæmatom. (Reoperation because of bleeding, infection, VCD and hematoma)



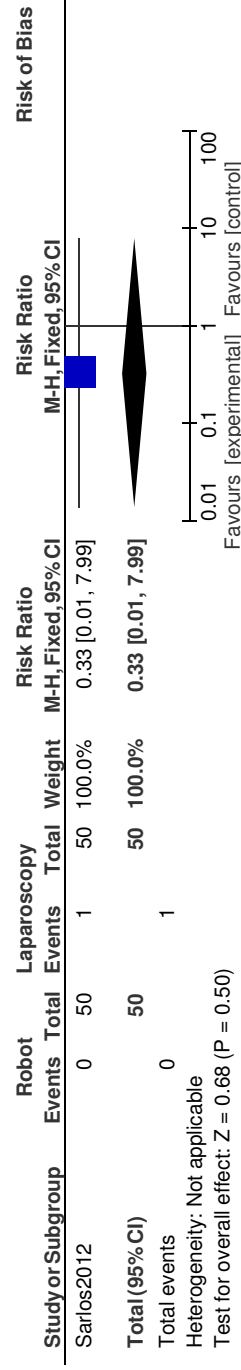
Risk of bias legend

3.3 Læsion af naboorganer (ureter-, tarm-, og karlæsioner). (Lesion of organs (ureter, bowel and vascular))



Risk of bias legend

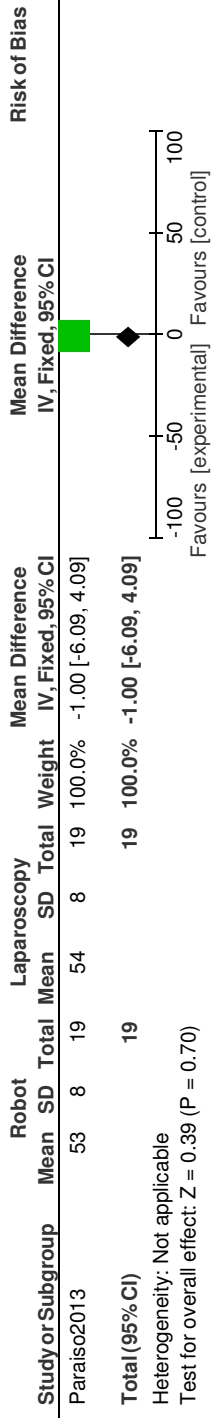
3.4 Vaginaltopsruptur (Vaginal cuff dehiscence)



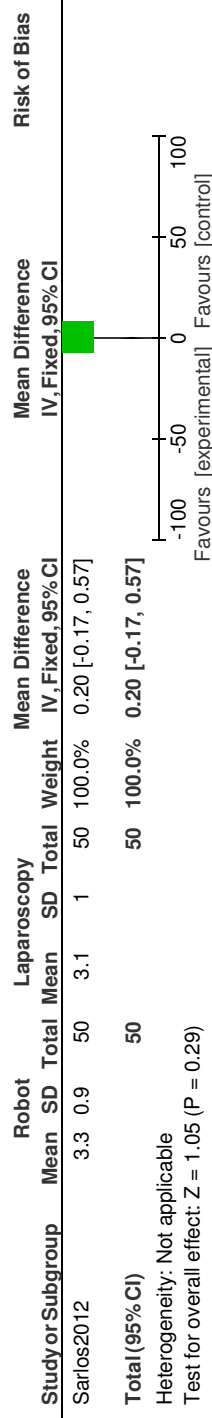
Risk of bias legend



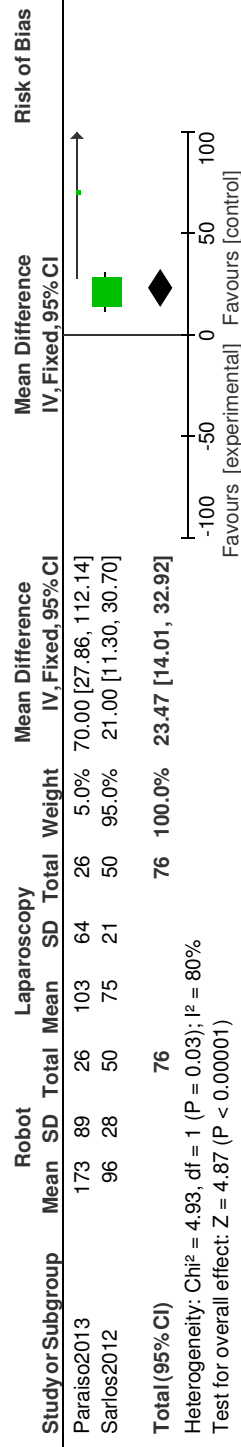
3.5 Livskvalitet (QoL)



3.6 Indlæggelsestid (dage) (Length of hospital stay (days))

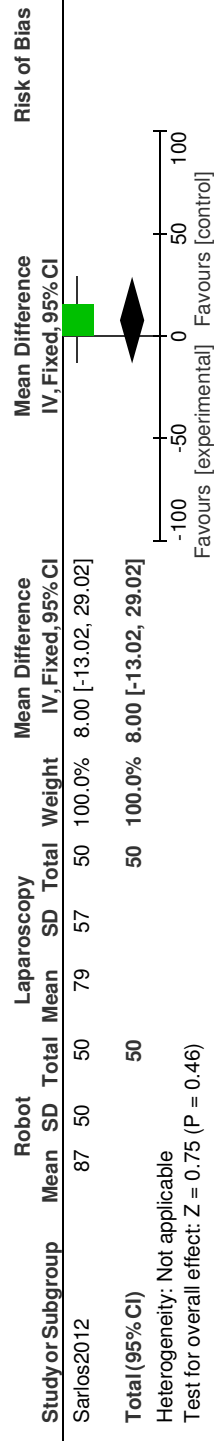


3.7 Operationstid (min.) (Operating time (mins))



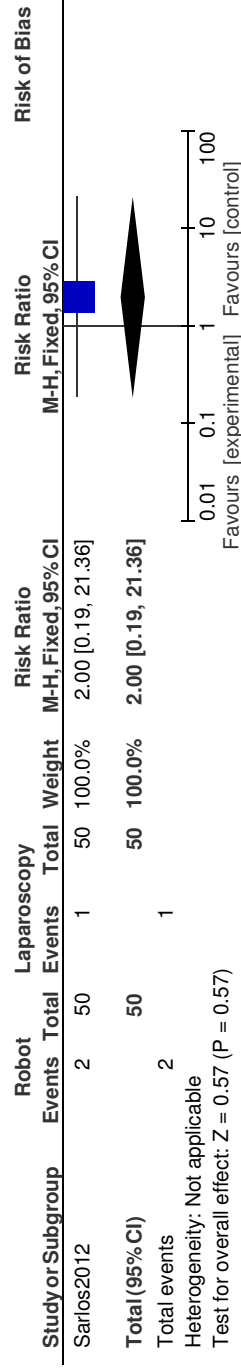
Risk of bias legend

3.8 Peroperativ blødning (ml) (Blood loss during surgery (mls))



Risk of bias legend

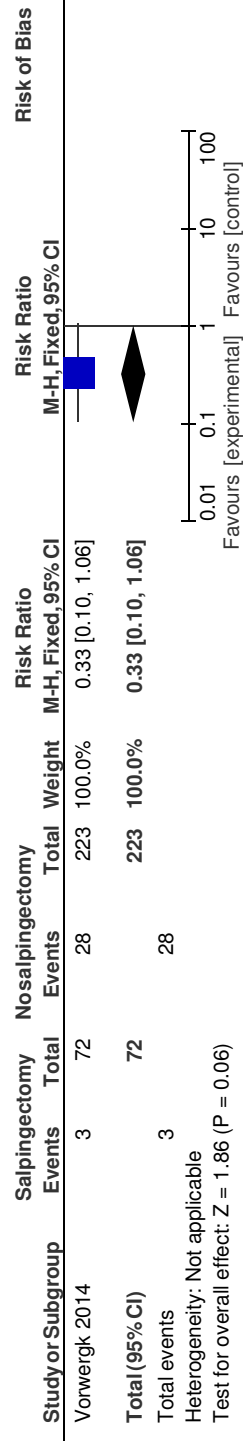
3.9 Infektion (Infection)



Risk of bias legend

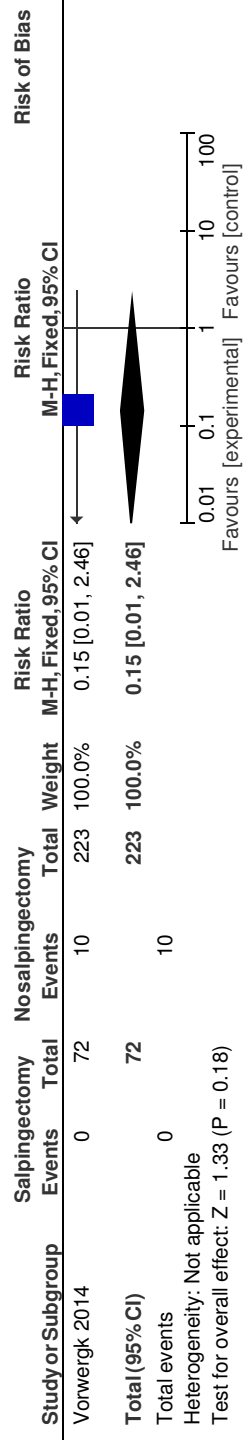
4 Fokuseret spørgsmål 5 (PICO6). Sammenligning imellem hysterektomi med og uden salpingektomi ved behandling af benign sygdom

4.1 Reoperation (Repeat surgery)



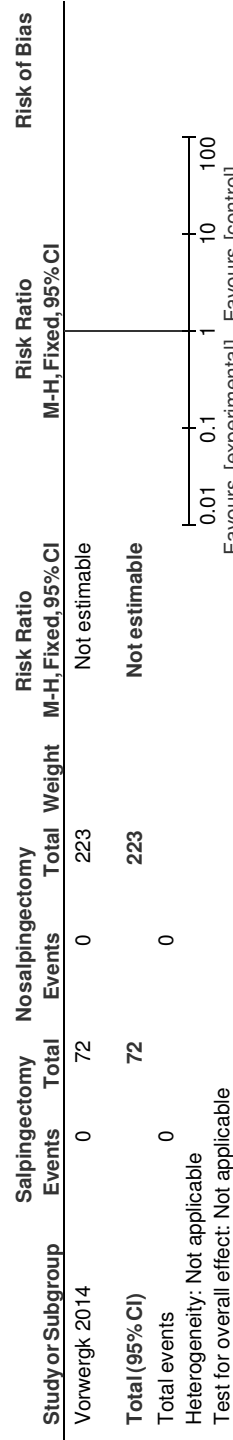
Risk of bias legend

4.2 Operation på salpinges (pga. hydrosalpinges og pyosalpinges) follow up 0-5 år. (surgery on salpinx (hydrosalpinx and pyosalpinx) follow up 0-5 years



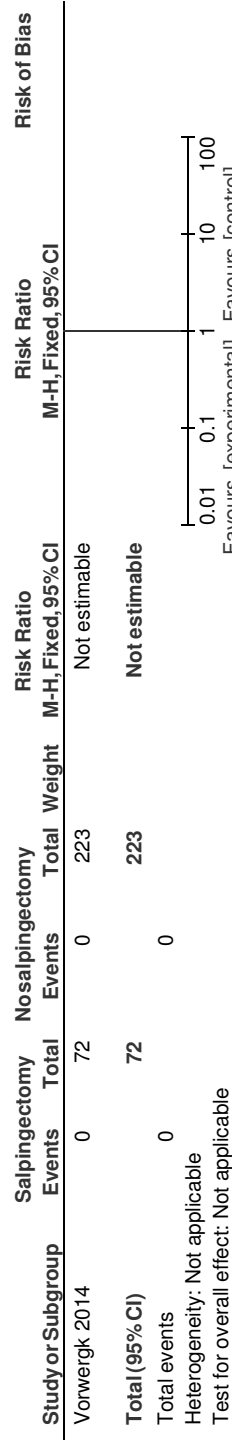
Risk of bias legend

4.3 Tubecancer. Gns. follow up: non-PBS\*\* 92 mdr., PBS† 55 mdr. (Tubal cancer, follow up non-PBS\*\* 92 months., PBS† 55 months)



Risk of bias legend

4.4 Ovariecancer. Gns. follow up: non-PBS\*\* 92 mdr., PBS† 55 mdr. (Ovarian cancer, follow up non-PBS\*\* 92 months., PBS† 55 months)



Risk of bias legend

4.5 Anti Müllersk Hormon (AMH)ng/mL. 3 mdr. follow up. (Anti-Müllerian Hormone, follow up: 3 months) - RCT

Study or Subgroup	Experimental		Control		Total	Weight	Mean Difference IV, Fixed, 95% CI	Risk of Bias
	Mean	SD	Mean	SD				
Findley 2013	1.86	1.99	1.82	3.12	13	100.0%	0.04 [-1.95, 2.03]	
<b>Total (95% CI)</b>	<b>14</b>	<b>14</b>	<b>13</b>	<b>13</b>	<b>13</b>	<b>100.0%</b>	<b>0.04 [-1.95, 2.03]</b>	

Heterogeneity: Not applicable  
Test for overall effect: Z = 0.04 (P = 0.97)

Risk of bias legend

4.6 Anti Müllersk Hormon (AMH)ng/mL. 3 mdr. follow up. (Anti-Müllerian Hormone, follow up: 3 months) - Observational study

Study or Subgroup	Salpingectomy		No salpingectomy		Total	Weight	Mean Difference IV, Fixed, 95% CI	Risk of Bias
	Mean	SD	Mean	SD				
Morelli 2013	0.49	0.4	0.51	0.5	79	100.0%	-0.02 [-0.16, 0.12]	
<b>Total (95% CI)</b>	<b>79</b>	<b>79</b>	<b>79</b>	<b>79</b>	<b>79</b>	<b>100.0%</b>	<b>-0.02 [-0.16, 0.12]</b>	

Heterogeneity: Not applicable  
Test for overall effect: Z = 0.28 (P = 0.78)

Risk of bias legend

4.7 Infektion (infection)

Study or Subgroup	Salpingectomy		No salpingectomy		Total	Weight	Risk Ratio M-H, Fixed, 95% CI	Risk of Bias
	Events	Total	Events	Total				
Ghezzi 2009	3	137	14	145	145	100.0%	0.23 [0.07, 0.77]	
<b>Total (95% CI)</b>	<b>3</b>	<b>137</b>	<b>14</b>	<b>145</b>	<b>145</b>	<b>100.0%</b>	<b>0.23 [0.07, 0.77]</b>	

Heterogeneity: Not applicable  
Test for overall effect: Z = 2.37 (P = 0.02)

Risk of bias legend

5 Fokuseret spørgsmål 6 (PIC09). Suspension af vaginaltoppen i forbindelse med fjernelse af en ikke-nedsunken livmoder pga. benign sygdom?

5.1 Prolaps (POP) (Pelvic prolapse)

Study or Subgroup	Robot		Laparoscopy		Risk Ratio		Risk Ratio		Risk of Bias	
	Events	Total	Events	Total	M-H, Fixed, 95% CI	M-H, Fixed, 95% CI	M-H, Fixed, 95% CI	M-H, Fixed, 95% CI		
<b>Total (95% CI)</b>	0	0	0	0	Not estimable					
Total events	0	0	0	0						
Heterogeneity: Not applicable										
Test for overall effect: Not applicable										

Risk of bias legend

5.2 Stressinkontinens 6 mdr. follow up. (Stress incontinence, follow up: 6 months)

Study or Subgroup	Suspension		Ingensuspension		Risk Ratio		Risk Ratio		Risk of Bias	
	Events	Total	Events	Total	M-H, Fixed, 95% CI	M-H, Fixed, 95% CI	M-H, Fixed, 95% CI	M-H, Fixed, 95% CI		
Long 2005	6	32	6	36	100.0%	1.13 [0.40, 3.14]				
<b>Total (95% CI)</b>	6	32	6	36	100.0%	1.13 [0.40, 3.14]				
Total events	6	6	6	6						
Heterogeneity: Not applicable										
Test for overall effect: Z = 0.22 (P = 0.82)										

Risk of bias legend

5.3 Læsion af naboorganer (skader på kar, ureter og blære) (Lesion of organs (vascular, ureter and bladder injury))

Study or Subgroup	Suspension		Ingensuspension		Risk Ratio		Risk Ratio		Risk of Bias	
	Events	Total	Events	Total	M-H, Fixed, 95% CI	M-H, Fixed, 95% CI	M-H, Fixed, 95% CI	M-H, Fixed, 95% CI		
Long 2005	4	32	4	36	100.0%	1.13 [0.31, 4.13]				
<b>Total (95% CI)</b>	4	32	4	36	100.0%	1.13 [0.31, 4.13]				
Total events	4	4	4	4						
Heterogeneity: Not applicable										
Test for overall effect: Z = 0.18 (P = 0.86)										

Risk of bias legend

5.4 Reoperation (Repeat surgery)

Study or Subgroup	Robot		Laparoscopy		Total Weight	Risk Ratio M-H, Fixed, 95% CI	Risk Ratio M-H, Fixed, 95% CI	Risk of Bias
	Events	Total	Events	Total				
Total (95% CI)	0	0	0	0	0	Not estimable		
Total events: 0								
Heterogeneity: Not applicable								
Test for overall effect: Not applicable								

Risk of bias legend  
5.5 Livskvalitet (QoL)

Study or Subgroup	Robot		Laparoscopy		Total Weight	Risk Ratio M-H, Fixed, 95% CI	Risk Ratio M-H, Fixed, 95% CI	Risk of Bias
	Events	Total	Events	Total				
Total (95% CI)	0	0	0	0	0	Not estimable		
Total events: 0								
Heterogeneity: Not applicable								
Test for overall effect: Not applicable								

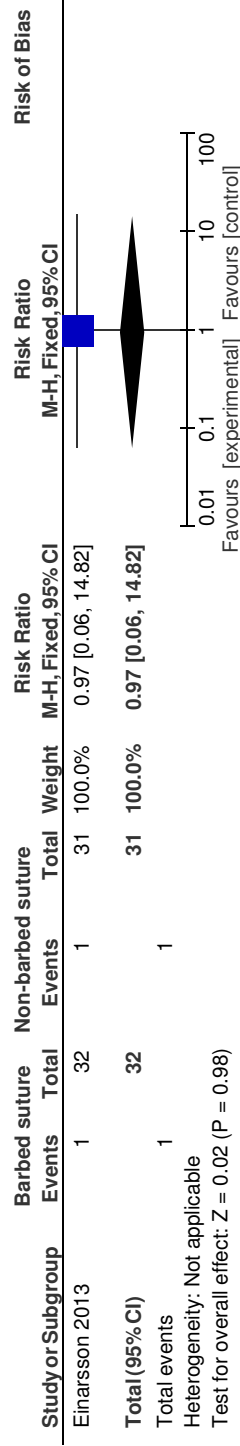
Risk of bias legend  
5.6 Operationstid (min.) (Operating time (mins))

Study or Subgroup	Suspension		Ingensuspension		Total Weight	Mean Difference IV, Fixed, 95% CI	Mean Difference IV, Fixed, 95% CI	Risk of Bias
	Mean	SD	Mean	SD				
Long 2005	95.6	42.7	32	91.1	38.3	4.50 [-14.88, 23.88]		
Total (95% CI)	32		32		36	100.0% 4.50 [-14.88, 23.88]		
Heterogeneity: Not applicable								
Test for overall effect: Z = 0.46 (P = 0.65)								

Risk of bias legend

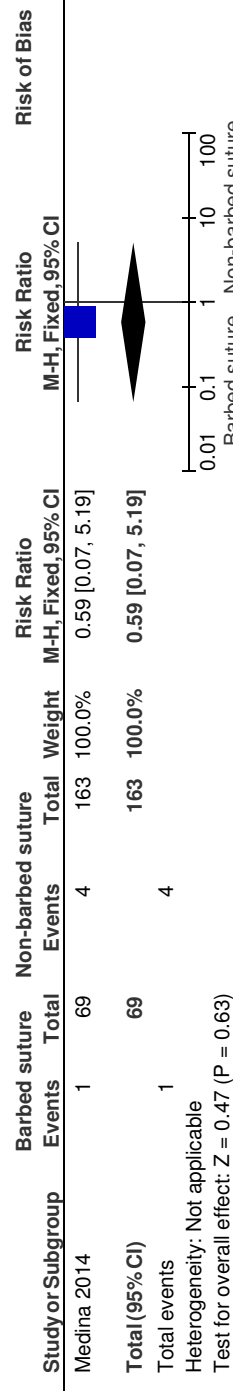
6 Fokuseret spørgsmål 9 (PICO7). Sutur med eller uden modhager til suturering af vaginaltoppen i forbindelse med total laparoskopisk hysterektomi pga. benign sygdom?

6.1 Reoperation for vaginaltopsrøptur (Repeat surgery because of vaginal cuff dehiscence)



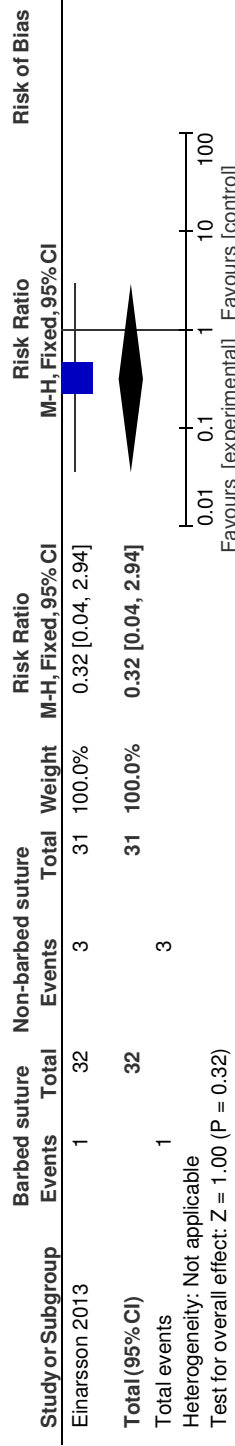
Risk of bias legend

6.2 Vaginaltopsrøptur (min. follow up > 1 mdr.) (Vaginal cuff dehiscence (min. follow up > 1 month))



Risk of bias legend

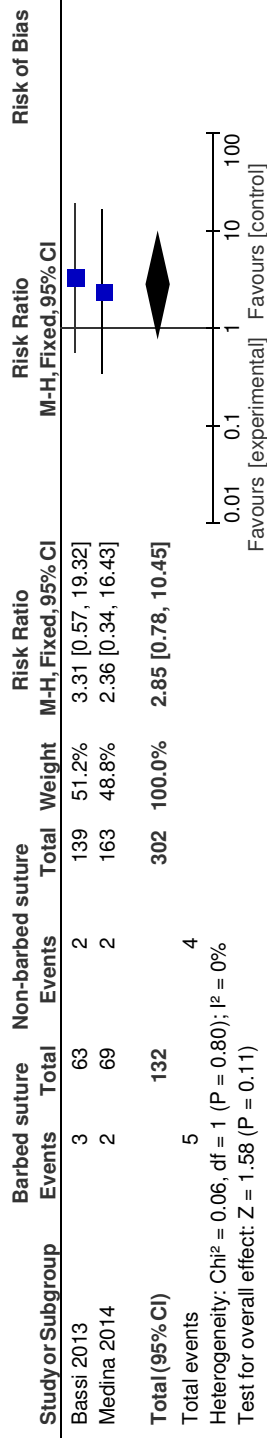
6.3 Infektion i vaginaltoppen, follow up: 3 uger (Infection of the vaginal cuff, follow up: 3 weeks) (follow up: 3 weeks)



Risk of bias legend

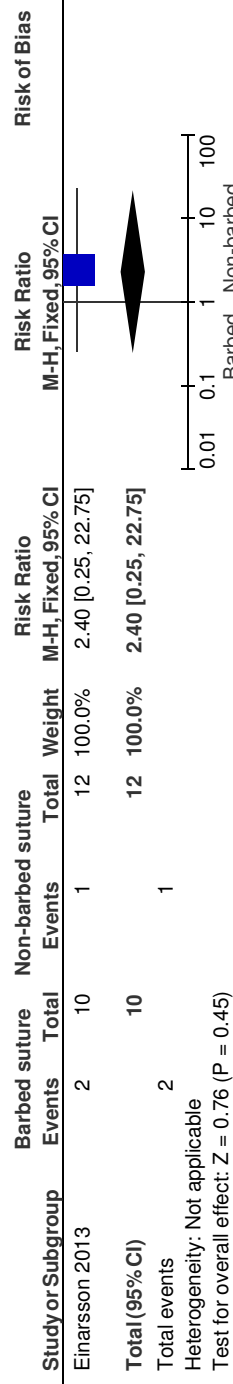
National klinisk retningslinje om hysterektomi (fjernelse af livmoderen) ved godartet...

6.4 Postoperative infektionskomplikationer (infektioner med kendt fokus) (Postoperative infectious complications (known focus))



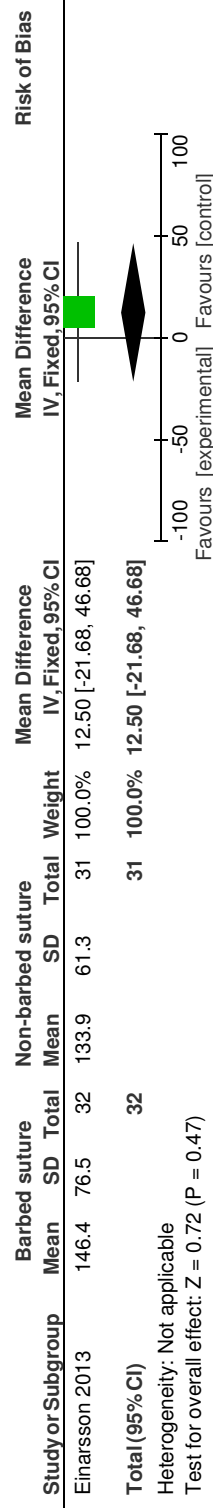
Risk of bias legend

6.5 Seksuel funktion - dyspareuni follow up: 3 mdr. (Sexual function - dyspareunia follow up: 3 months) (follow up: 3 months)



Risk of bias legend

6.6 Operationsstid (min.) (Operating time (mins)) (assessed with: min.)



Risk of bias legend